

RALOY

User Manual



IP Information

For IP-capable Raloy KVM Switches



REACH

Contents

1 Configuration	1
1-1 Initial Configuration	1
1-1.1 Setup Fixed IP	2
1-2 Keyboard, Mouse and Video Configuration	3
1-2.1 IP Module Keyboard Settings	3
1-2.2 Remote Mouse Settings	3
1-2.3 Automatic Mouse Speed and Mouse Synchronization	4
1-2.4 Host System Mouse Settings	4
1-2.5 Single and Double Mouse Mode	5
1-2.6 Recommended Mouse Settings	5
1-2.7 Video Modes	5
2 Usage	6
2-1 Prerequisites	6
2-2 Login into the IP Module and Logout	7
2-2.1 Login into the IP Module	7
2-2.2 Logout from the IP Module	8
2-3 The Remote Console	8
2-4 Main Window	9
2-4.1 Remote Console Control Bar	9
2-4.2 Remote Console Status Line	14
3 Menu Options	15
3-1 Remote Control	15
3-1.1 KVM Console	15
3-1.2 Telnet Console	15
3-2 User Management	16
3-2.1 Change Password	16
3-2.2 Users and Groups	17
3-3 KVM Settings	18
3-3.1 User Console	18
3-3.2 Keyboard / Mouse	20
3-3.3 Video	21
3-4 Device Settings	22
3-4.1 Network	22
3-4.2 Dynamic DNS	23

3-4.3 Security.....	25
3-4.4 Certificate.....	26
3-4.5 Serial Port.....	28
3-4.6 Date and Time.....	29
3-4.7 Event Log.....	30
3-5 Maintenance.....	32
3-5.1 Device Information.....	32
3-5.2 Event Log.....	33
3-5.3 Update Firmware.....	33
3-7.3 Update Firmware.....	33
3-5.4 Unit Reset.....	34
4 Troubleshooting.....	35
5 Frequently Asked Questions.....	36
6 Addendum.....	38
A. Key Codes.....	38
B. Video Modes.....	39
C. User Role Permissions.....	39
D. IP Module Port Table.....	40
E. Bandwidth Consumption.....	40
F. Cable Diagrams.....	41

1 Configuration

1-1 Initial Configuration

If DHCP mode is enabled (IP auto configuration = DHCP), the IP module will try to contact a DHCP server in the subnet to which it is physically connected. If a DHCP server is found, it may provide a valid IP address, gateway address and net mask. Before you connect the device to your local subnet, be sure to complete the corresponding configuration of your DHCP server. It is recommended to configure a fixed IP assignment to the MAC address of the IP module. You can find the MAC address labeled on the bottom side of the metal housing.

If DHCP mode is disabled (IP auto configuration = None), the factory default IP settings are as below:

IP Address	192.168.1.22
Subnet Mask	255.255.255.0
Default Gateway	None

IP Module Setup Tool

If this initial configuration does not meet your local requirements, use the setup tool to change the configurations to your needs. The setup tool PSetup can be found on the CD ROM delivered with this package. You can follow the procedures described below.

1. DHCP

If you have installed the IP module on a network that enables DHCP, you can use the PSetup to find out the IP module's IP.

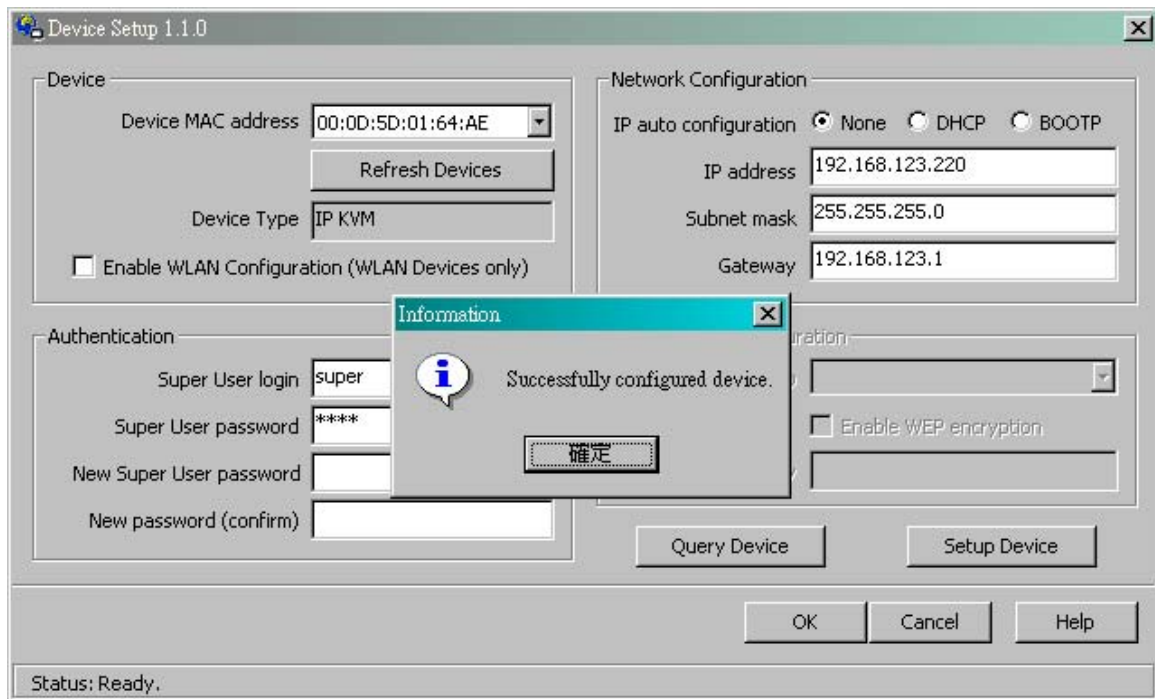
1. Plug Ethernet cable to IP module. IP MODULE will get an IP via DHCP.
2. Using PSetup (run PSetup.exe) to look for IP MODULE.
 - a. Select MAC address which label on bottom of IP module
 - b. Click Query Device

Notes:

- **BOOTP**, a static configuration protocol, uses a table that maps IP addresses to physical addresses.
- **DHCP**, an extension to BOOTP that dynamically assigns configuration information. DHCP is backward compatible with BOOTP.

2. Setup Fixed IP

- c. Setup "IP auto configuration" as "None" ; setup IP address and Subnet mask
- d. Enter Super user login and password for Authentication (default : super/pass)
- e. Click Setup Device. If super login was authenticated, it'll show "Successfully configured device". Otherwise it'll show "Permission Denied".



Authentication

To adjust the authentication settings, enter your login as a super user, and change your password.

Super user login

Enter the login name of the super user. The initial value is "super". All characters are in lower case.

Super user password

Enter the current password for the super user. This initial value is "pass". All characters are in lower case.

New super user password

Enter the new password for the super user.

New password (confirm)

Re-type the new password for the super user for confirmation.

To close the window and accept the changes, press the "OK" button; otherwise press the "Cancel" button.

1-1.1 Setup Fixed IP

For using serial terminal, the IP module has a serial line interface (host side). This connector is compliant with the RS-232 serial line standard. The serial line has to be configured with the parameters given in the table below.

When configuring with a serial terminal, e.g., Hyper Terminal, reset the IP module and immediately press the "ESC" key. You will see some device information, and a "=>"

prompt. Enter “config”, press “Enter” key and wait for a few seconds for the configuration questions to appear.

Parameter	Value
Bits/second	115200
Data bits	8
Parity	No
Stop bits	1
Flow Control	None

As you proceed, the following questions will appear on the screen. To accept the default values shown in square brackets below, press “Enter” key.

IP auto configuration (none/dhcp/bootp):
IP [192.168.1.22]:
Net mask [255.255.255.0]:
Gateway (0.0.0.0 for none) [0.0.0.0]:

IP Auto-Configuration

With this option, you can specify whether the IP module should get its network settings from a DHCP or BOOTP server. For DHCP, enter “dhcp”, and for BOOTP enter “bootp”. If you do not specify any of these, the IP auto-configuration is disabled and subsequently you will be asked for the following network settings.

IP Address

The IP address the IP module. This option is only available if IP auto-configuration is disabled.

Net Mask

The net mask of the connected IP subnet. This option is only available if IP auto-configuration is disabled.

Gateway Address

The IP address of the default router for the connected IP subnet. If you do not have a default router, enter 0.0.0.0. This option is only available if IP auto-configuration is disabled.

1-2 Keyboard, Mouse and Video Configuration

Between the IP module and the host, there are two interfaces available for transmitting keyboard and mouse data: USB and PS/2. The correct operation of the remote mouse depends on several settings which will be discussed in the following subsections.

1-2.1 IP Module Keyboard Settings

The IP module settings for the host’s keyboard type have to be corrected in order to make the remote keyboard work properly. Check the settings in the IP module Web front-end. See section 3.5.2 for details.

1-2.2 Remote Mouse Settings

A common seen problem with KVM devices is the synchronization between the local and remote mouse cursors. The IP module addresses this situation with an intelligent synchronization algorithm. There are two mouse modes available on the IP module:

Auto Mouse Speed

The automatic mouse speed mode tries to detect the speed and acceleration settings of the host system

automatically. See the section below for a more detailed explanation.

Fixed Mouse Speed

This mode just translates the mouse movements from the Remote Console in a way that one pixel move will result in n-pixel moves on the remote system. This parameter n is adjustable with the scaling. Please note that this works only when mouse acceleration is turned off on the remote system.

1-2.3 Automatic Mouse Speed and Mouse Synchronization

The automatic mouse speed mode performs the speed detection during mouse synchronization. Whenever the local and remote mouse cursors move synchronously or not, there are two ways for re-synchronizing local and remote mouse cursors:

Fast Sync

The fast synchronization is used to correct a temporary, but fixed skew. Choose the option using the Remote Console options menu or press the mouse synchronization hotkey sequence in case you defined one.

Intelligent Sync

If the fast sync does not work or the mouse settings have been changed on the host system, use the intelligent resynchronization. This method takes more time than the fast one and can be accessed with the appropriate item in the Remote Console option menu. The intelligent synchronization requires a correctly adjusted picture. Use the auto adjustment function to setup the picture, and make sure that there are no windows at the top left corner of the remote desktop that are able to change the mouse cursor shape from the normal state. The Sync mouse button on top of the Remote Console can behave differently, depending on the current state of mouse synchronization. Usually pressing this button leads to a fast sync, except in situations where the KVM port or the video mode changed recently.

Note: At first start, if the local mouse pointer is not synchronized with the remote mouse pointer, press the Auto Adjust Button once.

1-2.4 Host System Mouse Settings

The host's operating system knows various settings from the mouse driver.

Warning

While the IP module works with accelerated mice and is able to synchronize the local with the remote mouse pointer, there are the following limitations, which may prevent this synchronization from working properly:

While the IP module works with accelerated mice and is able to synchronize the local with the remote mouse pointer, there are the following limitations, which may prevent this synchronization from working properly:

Special Mouse Driver

There are mouse drivers that influence the synchronization process and lead to desynchronized mouse pointers. If this happens, make sure you do not use a special vendor-specific mouse driver on your host system.

Windows XP Mouse Settings

Windows XP knows a setting named "improve mouse acceleration", which has to be deactivated.

Active Desktop

If the Active Desktop feature of Microsoft Windows is enabled do not use a plain background. Instead, use some kind of wallpaper. As an alternative, you could also disable the Active Desktop completely.

Navigate your mouse pointer into the upper left corner of the applet screen and move it slightly forth and back. Thus the mouse will be resynchronized. If re-synchronizing fails, disable the mouse acceleration and repeat the procedure.

1-2.5 Single and Double Mouse Mode

The information above applies to the Double Mouse Mode, where remote and local mouse pointers are visible and need to be synchronized. The IP module also features another mode, the Single Mouse Mode, where only the remote mouse pointer is visible. Activate this mode in the open Remote Console and click into the window area. The local mouse pointer will be hidden and the remote one can be controlled directly. To leave this mode, it is necessary to define a mouse hotkey in the Remote Console Settings Panel. Press this key to free the captured local mouse pointer.

1-2.6 Recommended Mouse Settings

For the different operating systems we can give the following advice:

MS Windows 2000/2003 (Professional and Server) and XP (all versions)

In general, we recommend the usage of a mouse via USB. Choose USB without Mouse Sync. For a PS/2 mouse choose Auto Mouse Speed. For XP disable the option "enhance pointer precision" in the Control Panel.

SUN Solaris

Adjust the mouse settings either via `xset m 1` or use the CDE Control Panel to set the mouse to "1:1, no acceleration". As an alternative you may also use the Single Mouse Mode.

MAC OS X

We recommend using the Single Mouse Mode.

1-2.7 Video Modes

The IP module recognizes a limited number of common video modes. When running X11 on the host system, please do not use any custom mode lines with special video modes. If you do, the IP module may not be able to detect them. We recommend using any of the standard VESA video modes, instead.

2 Usage

2-1 Prerequisites

The IP module features an embedded operating system and applications offering a variety of standardized interfaces. This chapter will describe both these interfaces, and the way to use them in a more detailed manner. The interfaces are accessed using the TCP/IP protocol family, thus they can be accessed using the LAN port of the device.

The following interfaces are supported:

HTTP/HTTPS

Full access is provided by the embedded web server. The IP module environment can be entirely managed using a standard web browser. You can access the IP module using the insecure HTTP protocol, or using the encrypted HTTPS protocol. Whenever possible, use HTTPS.

Telnet

A standard Telnet client can be used to access an arbitrary device connected to the IP module's serial port via a terminal mode. The primary interface of the IP module is the HTTP interface. This is covered extensively in this chapter. Other interfaces are addressed in subtopics.

In order to use the Remote Console window of your managed host system, the browser has to come with a Java Runtime Environment version 1.4.2 or above. If the browser has no Java support (such as on a small handheld device), you are still able to maintain your IP module using the administration forms displayed by the browser itself.

Note: We recommend installing a Sun JVM 1.5.0.4.

For an insecure connection to the IP module, we can recommend the following browsers:

- Microsoft Internet Explorer version 6.0 or higher on Windows 2000 and Windows XP
- Netscape Navigator 7.0 or Mozilla 1.6 on Windows 2000, Windows XP, Unix, Linux and UNIX-like Operating Systems

In order to access the remote host system using a securely encrypted connection, you need a browser that supports the HTTPS protocol. Strong security is only assured by using a key length of 128 Bit. Some of the old browsers do not have a strong 128 Bit encryption algorithm.

Using the Internet Explorer, open the menu entry “?” and “Info” to read about the key length that is currently activated. The dialog box contains a link that leads you to information on how to upgrade your browser to a state of the art encryption scheme. The image below shows the dialog box presented by the Internet Explorer 6.0.



Newer web browsers generally support strong encryption on default.

2-2 Login into the IP Module and Logout

2-2.1 Login into the IP Module


Launch your web browser. Direct it to the address of your IP module, which you configured during the installation process. The address used might be an IP address or a domain name, in the case where you have given your IP module a symbolic name in the DNS. For instance, type the following in the URL field of your browser when establishing an unsecured connection:

http://<IP address of IP module>

When using a secure connection, type in:

https://<IP address of IP module>

This will lead you to the IP module login page as shown below.



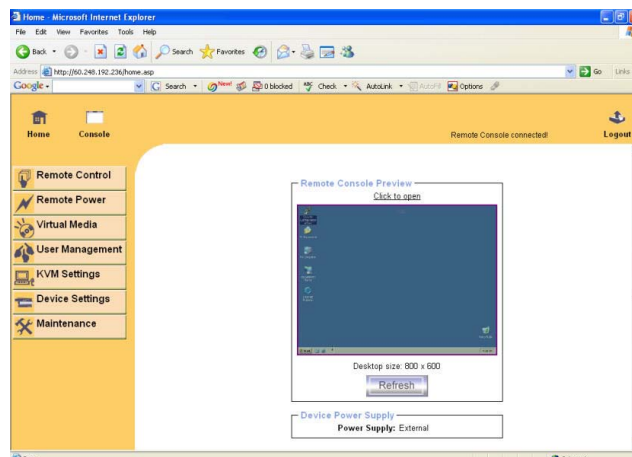
The IP module has a built-in super user that has all permissions to administrate your IP module:

Warning

- The user “super” is not allowed to login via the serial interface of the IP module
- Please make sure to change the super user password immediately after you have installed and accessed your IP module for the first time. Unchanging of the password for the super user is a severe security risk and might result in unauthorized access to the IP module and to the host system including all possible consequences!
- Your web browser has to accept cookies, or else login is not possible.

Navigation

Having logged into the IP module successfully, the main page of the IP module appears. This page consists of three parts; each of them contains specific information. The buttons on the upper side allow you to navigate within the front end. Within the right frame, task-specific information is displayed that depends on the section you have chosen before.





Return to the main page of the IP module.



Open the IP module remote console.



Exit from the IP module front end.

Warning

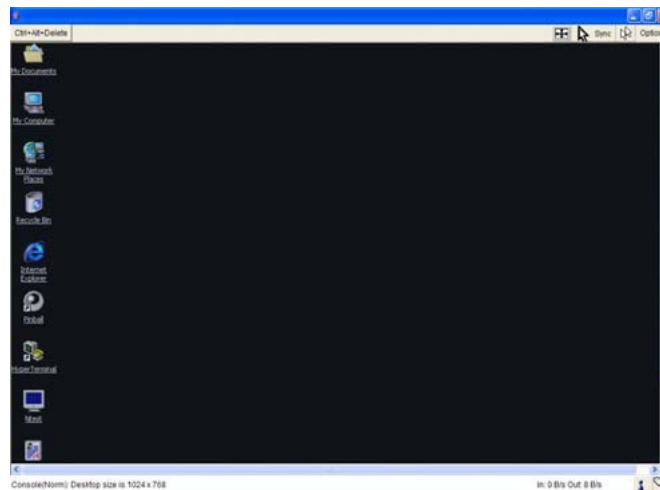
If there is no activity for 30 minutes, the IP module will log you out, automatically. A click on one of the links will bring you back to the login screen.

2-2.2 Logout from the IP Module

This link logs out the current user and presents a new login screen. Please note that an automatic logout will be performed if there is no activity for 30 minutes.

2-3 The Remote Console

The Remote Console is the redirected screen, keyboard and mouse of the remote host system that IP module controls.



The Remote Console window is a Java Applet that tries to establish its own TCP connection to the IP module. The protocol that is run over this connection is neither HTTP or HTTPS, but RFB (Remote Frame Buffer Protocol). As default, RFB tries to establish a connection to TCP port number 443. Your local network environment has to allow this connection to be made, i.e. your firewall and, in case you have a private internal network, your NAT (Network Address Translation) settings have to be configured accordingly.

In case the IP module is connected to your local network environment and your connection to the Internet is available using a proxy server only without NAT being configured, the Remote Console is very unlikely to be able to establish the desired connection. This is because today's web proxies are not capable of relaying the RFB protocol.

In case of problems, please consult your network administrator in order to provide an appropriate networking environment.

2-4 Main Window

Starting the Remote Console opens an additional window. It displays the screen content of your host system. The Remote Console will behave exactly in the same way as if you were sitting locally in front of the screen of your remote system. That means keyboard and mouse can be used in the usual way. However, be aware of the fact that the remote system will react to keyboard and mouse actions with a slight delay. The delay depends on the bandwidth of the link to which you use to connect to the IP module.

With respect to the keyboard, the very exact remote representation might lead to some confusion as your local keyboard changes its keyboard layout according to the remote host system. If you use a German administration system, and your host system uses a US English keyboard layout, for instance, special keys on the German keyboard will not work as expected. Instead, the keys will result in their US English counterpart. You can circumvent such problems by adjusting the keyboard of your remote system to the same mapping as your local one.

The Remote Console window always tries to show the remote screen with its optimal size. That means it will adapt its size to the size of the remote screen initially and after the screen resolution of the remote screen has been changed. However, you can always resize the Remote Console window in your local window system as usual.

Warning

In difference to the remote host system, the Remote Console window on your local window system is just one window among others. In order to make keyboard and mouse work, your Remote Console window must have the local input focus.

2-4.1 Remote Console Control Bar

The upper part of the Remote Console window contains a control bar. Using its elements you can see the state of the Remote Console and adjust the local Remote Console settings. A description for each control follows.



Ctrl+Alt+Delete

Special button key to send the “Control Alt Delete” key combination to the remote system (see also section 3.4.1 for defining new button keys).

Auto Adjust button

If the video display is of bad quality or distorted in some way, press this button and wait a few seconds while the IP module tries to detect the video mode of VGA port to the controlled host and adjust itself for the best possible video quality.

Sync mouse

Activates the mouse synchronization process. Choose this option in order to synchronize the local with the remote mouse cursor. This is especially necessary when using accelerated mouse settings on the host system. In general, there is no need to change mouse settings on the host.

Single/Double mouse mode

Switches between the Single Mouse Mode (where only the remote mouse pointer is visible) and the Double Mouse Mode (where remote and local mouse pointers are visible and need to be synchronized). Single mouse mode is only available if using SUN JVM 1.4.2 or higher.

Options

To open the Options menu, click on the button “Options”.



A short description of the options follows.

■ **Monitor Only**

Toggles the Monitor only filter on or off. If the filter is switched on no remote console interaction is possible, and monitoring is possible.

■ **Exclusive Access**

If a user has the appropriate permission, he or she can force the Remote Consoles of all other users to close. No one can open the Remote Console at the same time again until this user disables the exclusive access, or logs off. A change in the access mode is also visible in the status line.

■ **Mouse Handling**

The submenu for mouse handling offers two options for synchronizing the local and the remote mouse cursors.

Fast Sync

The fast synchronization is used to correct a temporary, but fixed skew.

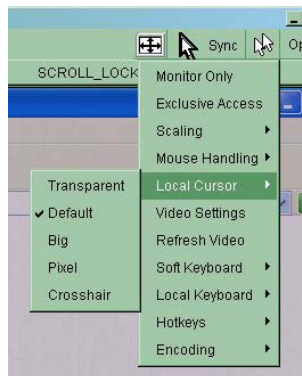
Intelligent Sync

Use this option if the fast sync does not work or the mouse settings have been changed on the host system.

Warning
 This method takes more time than the fast one and requires a correctly adjusted picture. Use the auto adjustment function to setup the picture.

■ **Local Cursor**

Offers a list of different cursor shapes to choose from for the local mouse pointer. The selected shape will be saved for the current user and activated the next time this user opens the Remote Console. The number of available shapes depends on the Java Virtual Machine; a version of 1.4.2 or above offers the full list.



■ Video Settings

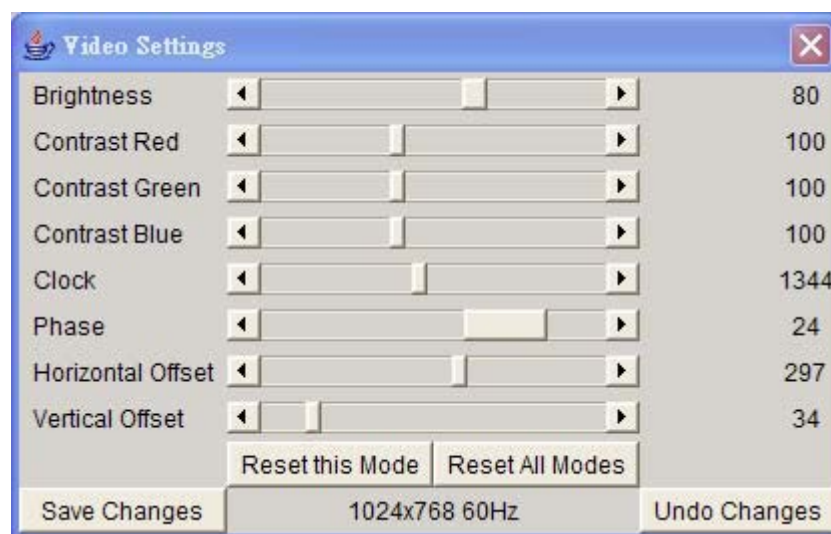
Opens a panel for changing the IP module video settings. IP module features two different dialogs, which for adjusting the video settings.

Video Settings through the HTML-Frontend

To enable local video port, select this option. This option decides if the local video output of IP module is active and passing through the incoming signal from the host system.

The option Noise Filter defines how IP module reacts to small changes in the video input signal. Turning on the noise filter can help reduce video flickering that is often caused by distortions, as well as lowering unnecessary bandwidth consumption. A large filter setting needs less network traffic and leads to a faster video display, but small changes in some display regions may not be recognized immediately. A small filter displays all changes instantly but may lead to a constant amount of network traffic even if display content is not really changing (depending on the quality of the video input signal). All in all the default setting should be suitable for most situations.

Video Settings through the remote console:



Brightness

Controls the brightness of the picture

Contrast

Controls the contrast of the picture

Clock

Defines the horizontal frequency for a video line and depends on the video mode. Different video card types may require different values here. The default settings in conjunction with the auto adjustment procedure should be adequate for all common configurations. If the picture quality is still bad after auto adjustment you may try to change this setting together with the sampling phase to achieve a better quality.

Phase

Defines the phase for video sampling, used to control the display quality together with the setting for sampling clock.

Horizontal Position

Use the left and right buttons to move the picture in horizontal direction while this option is selected.

Vertical Position

Use the left and right buttons to move the picture in vertical direction while this option is selected.

Reset this Mode

Reset mode specific settings (Clock , Phase and Position) to the factory-made defaults.

Reset all Modes

Reset all settings to the factory-made defaults.

Save changes

Save changes permanently

Undo Changes

Restore last settings

■ Refresh Video

Click to run this menu item for retrieving the whole video again from the controlled host and displayed on Remote Console. In normal situation, only changed parts of video will be packed and sent from IP module, for saving network bandwidth. This function is mainly used for troubleshooting purpose where some old video fragments are displayed as not updated in time for some reason; for example, noise filter for VGA is setting too large.

■ Soft Keyboard



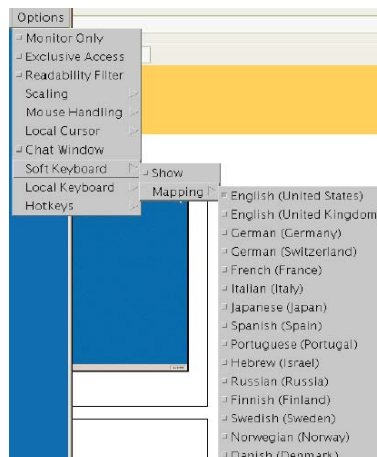
Opens up the Menu for the Soft-Keyboard.

■ Show

Pops up the Soft-Keyboard. The Soft-Keyboard is necessary in case your host system runs a completely different language and country mapping than your administration machine.

■ Mapping

Used for choosing the specific language and country mapping of the Soft-Keyboard.



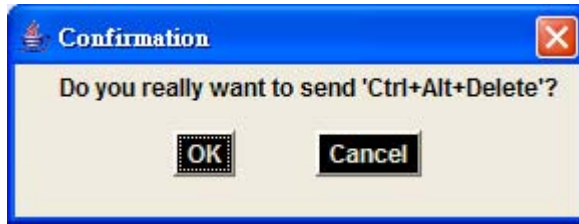
■ Local Keyboard

Used to change the language mapping of your browser machine running the Remote Console Applet. Normally, the applet determines the correct value automatically. However, depending on your particular JVM and your browser settings this is not always possible. A typical example is a German localized system that uses an US-English keyboard mapping. In this case you have to change the Local Keyboard setting to the right language, manually.

■ Hotkeys

Opens a list of hotkeys defined before. Choose one entry, the command will be sent to the host system.

A confirmation dialog can be added that will be displayed before sending the selected command to the remote host. Select "OK" to execute the command on the remote host.



■ Encoding

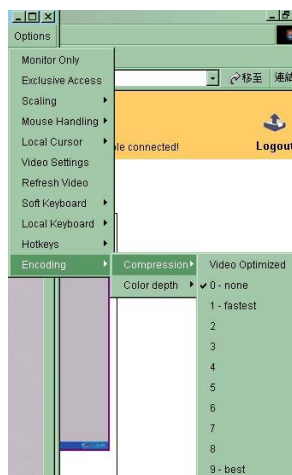
These options are used to adjust the encoding level in terms of compression and color depth. They are only available unless "Transmission Encoding" is determined automatically (see the Section called Transmission Encoding in Chapter 3).

Compression Level:

You may select a value between 1 and 9 for the desired compression level with level 1 enabling the fastest compression and level 9 the best compression. The most suitable compression level should always be seen as a compromise between the network bandwidth that is available, on your video picture to be transferred, and on the number of changes between two single video pictures. We recommend to use a higher compression level if the network bandwidth is low. The higher the compression level the more time is needed to pack and unpack the video data on either side of the connection. The compression quality depends on the video picture itself, e.g. the number of the colors or the diversity of pixels. The lower the compression quality, the more data have to be sent and the longer it may take to transfer the whole video picture.

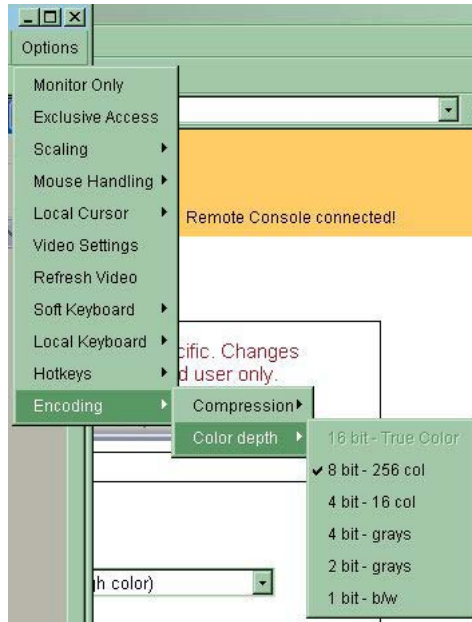
If level 0 is chosen the video compression is disabled, completely.

The option "Video Optimized" has its advantages if transferring high-quality motion pictures. In this case the video compression is disabled, completely and all video data is transferred via network as full-quality video snippets. Therefore, a high amount of bandwidth is required to ensure the quality of the video picture.



Color Depth

Set the desired color depth. You may select between 8 or 16 bit for Video Optimized/compression level 0, or between 1 and 8 bit for compression level 1 to 9. The higher the color depth, the more video information has to be captured and to be transferred.



Note: If displaying motion pictures on a connection with low speed you may achieve an improvement regarding the video transfer rate by lowering the color depth and disabling the option “Video Optimized”. As a general result, the data rate is reduced (less bits per color). Furthermore, the OPMA module will not have to do any video compression. In total, this will lead to less transfer time of the motion picture.

2-4.2 Remote Console Status Line

Status line

Shows both console and the connection state. The size of the remote screen is displayed. The image below was taken from a Remote Console with a resolution of 800x600 pixels. The value in brackets describes the connection to the Remote Console. “Norm” means a standard connection without encryption, “SSL” means a secure connection.

Console(Norm): Desktop size is 1024 x 768

In: 0 B/s Out: 0 B/s



Furthermore, both the incoming (“In:”) and the outgoing (“Out:”) network traffic are visible (in kb/s). If compressed encoding is enabled, a value in brackets displays the compressed transfer rate.

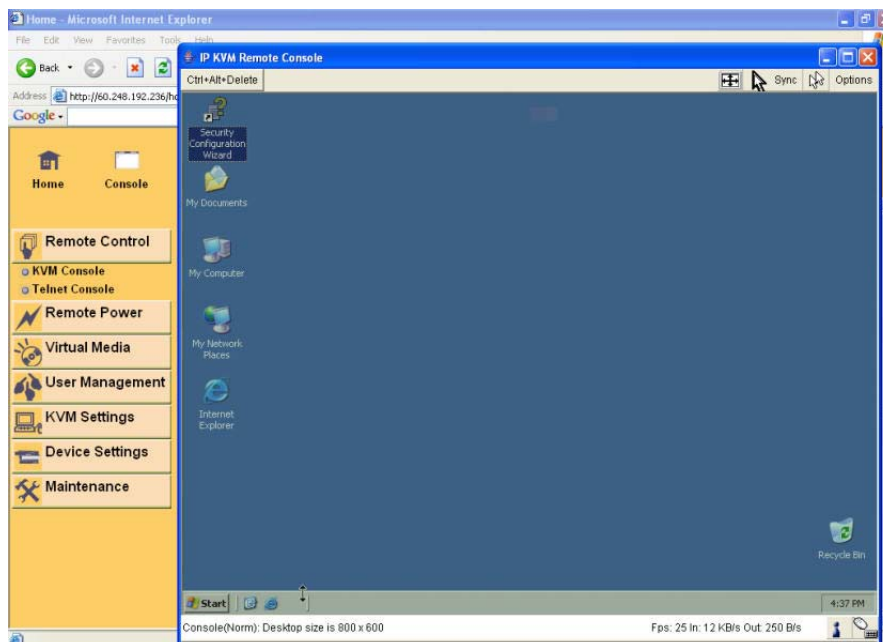
In: 0 B/s Out: 0 B/s

For more information about Monitor Only and Exclusive Access settings, see related sections

3 Menu Options

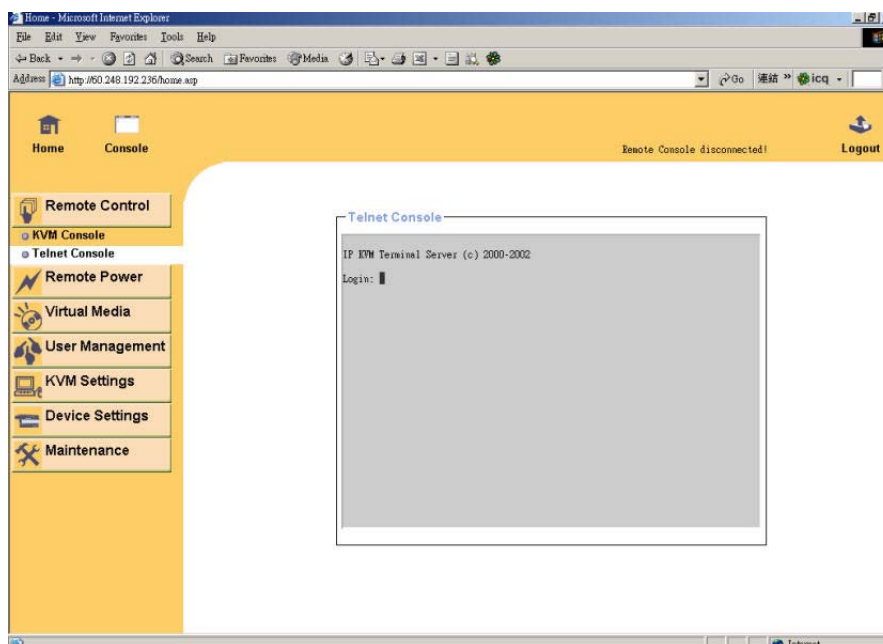
3-1 Remote Control

3-1.1 KVM Console



To open the KVM console, either click on the menu entry on the left, or on the console picture on the right. To refresh the picture, click on the button “Refresh”.

3-1.2 Telnet Console



The IP module firmware features a Telnet server that enables a user to connect via a standard Telnet client. In case the Telnet program is using a VT 100, VT 102 or VT 220 terminal or an according emulation, it is even possible to perform a console redirection as long as the IP module host machine is using a text mode screen resolution.

Connecting to the IP module is done as usual and as required by the Telnet client, for instance in a UNIX shell:

```
telnet 192.168.1.22
```

Replace the IP address by the one that is actually assigned to the IP module. This will prompt for username and password in order to log into the device. The credentials that need to be entered for authentication are identical to those of the web interface. That means, the user management of the Telnet interface is entirely controlled with the according functions of the web interface.

Once you have successfully logged into the IP module a command line will be presented and you can enter according management commands.

In general, the Telnet interface supports two operation modes: the command line mode and the terminal mode. The command line mode is used to control or display some parameters. In terminal mode the pass-through access to serial port 1 is activated (if the serial settings were configured accordingly). All inputs are redirected to the device on serial port 1 and its answers are displayed on the Telnet interface.

The following list shows the according command mode command syntax and their usage.

help

Displays the list of possible commands

cls

Clears the screen

quit

Exits the current session and disconnects from the client

version

Displays the release information

terminal

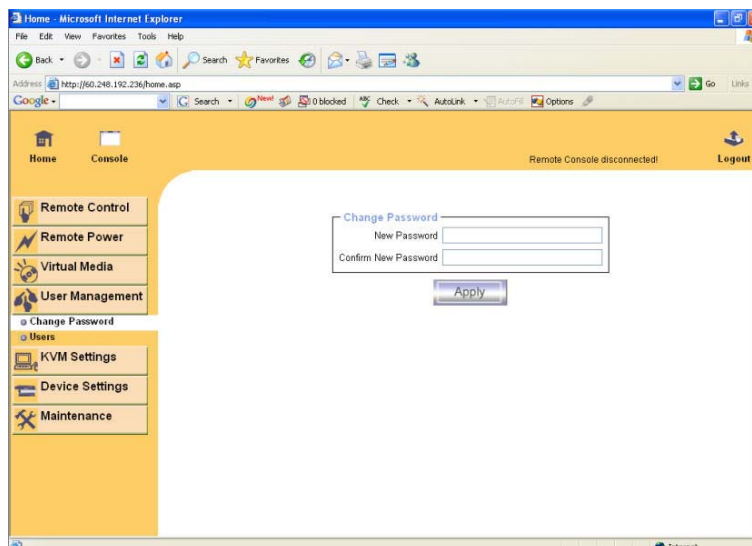
Starts the terminal passthrough mode for serial port 1. The key sequence

esc exit

switches back to the command mode.

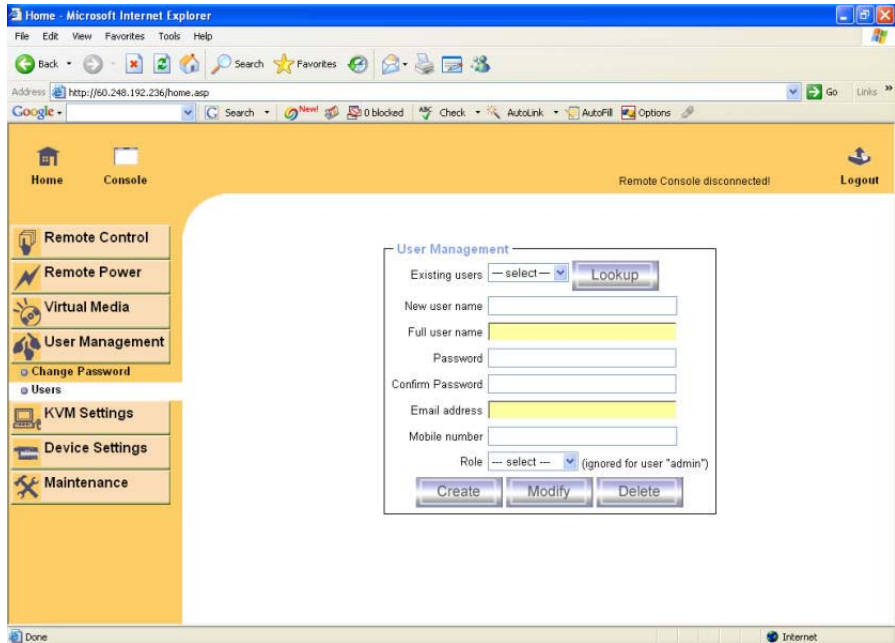
3-2 User Management

3-2.1 Change Password



To change your password, enter the new password in the upper entry field. Retype the password in the field below. Click “Apply” to submit your changes.

3-2.2 Users and Groups



The IP module comes with 1 pre-configured user account that has fixed permissions. The account “super” has all possible rights to configure the device and to use all functions IP module offers.

Upon delivery, the account “super” has the password “pass”. Make sure to change password immediately after you have installed and on initial access of your IP module.

Existing users

Select an existing user for modification. Once a user has been selected, click the lookup button to see the user information.

New User Name

The new user name for the selected account.

Password

The password for the login name. It must be at least three characters long.

Confirm password

Confirmation of the password above.

Email address

This is optional.

Mobile number

This information may be optionally provided.

Role

Each user can be a member of a group (named a “role”) - either an administrator, or an regular user. Choose the desired role from the selection box.

To create an user press the button “Create”. The button “Modify” changes the displayed user settings. To delete an user press the button “Delete”.

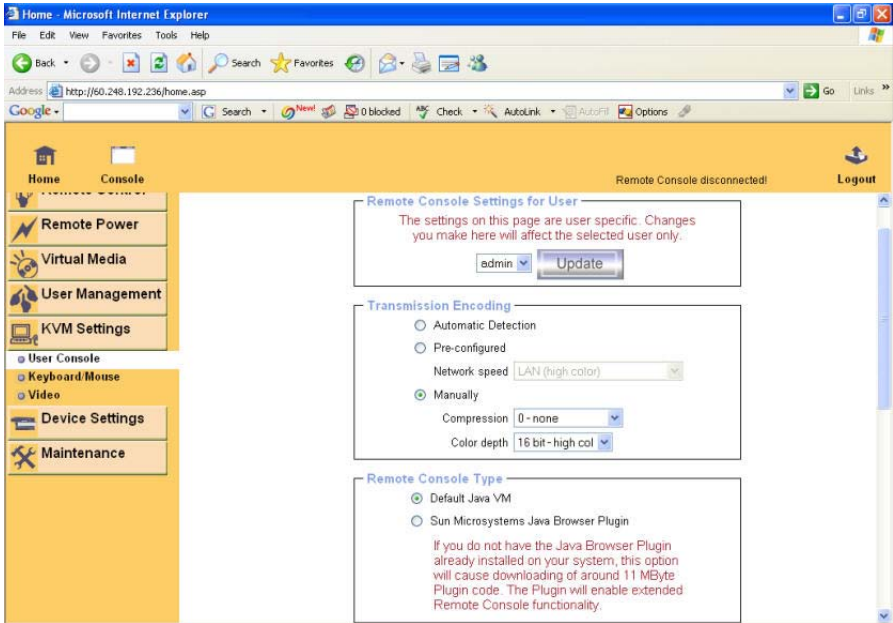
Note:The IP MODULE is equipped with an host-independent processor and memory unit which both have a

limitation in terms of the processing instructions and memory space. To guarantee an acceptable response time we recommend not to exceed the number of 15 users connected to the IP MODULE at the same time. The memory space that is available onto the IP MODULE mainly depends on the configuration and the usage of the IP MODULE (log file entries etc.). That's why we recommend not to store more than 150 user profiles.

3-3 KVM Settings

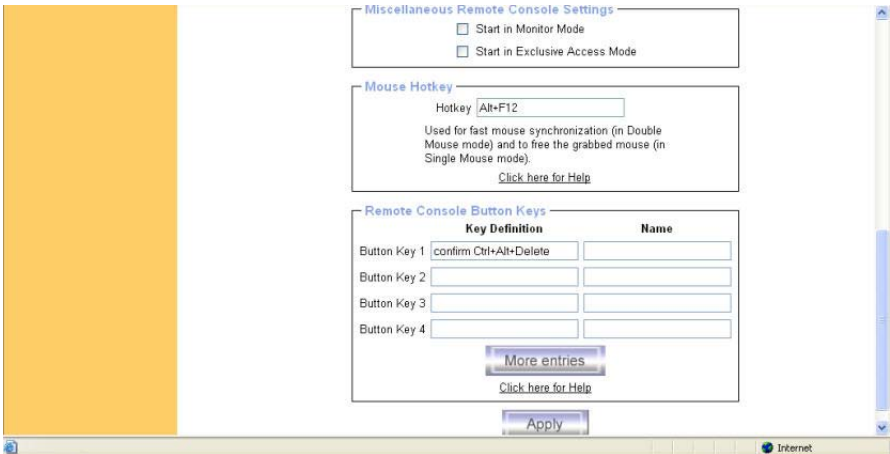
3-3.1 User Console

The following settings are user specific. That means, the super user can customize these settings for every users separately. Changing the settings for one user does not affect the settings for the other users.



User select box

This selection box displays the user ID for which the values are shown and for which the changes will take effect. You may change the settings of other users if you have the required privileges.



Remote Console Type

Specifies, which Remote Console Viewer to use.

Default Java-VM

Uses the default Java Virtual Machine of your Browser. This may be the Microsoft JVM for the Internet Explorer, or the Sun JVM if it is configured this way. Use of the Sun JVM may also be forced (see

below).

Sun Microsystems Java Browser Plugin

Instructs the web browser of your administration system to use the JVM of Sun Microsystems. The JVM in the browser is used to run the code for the Remote Console window, which is actually a Java Applet. If you check this box for the first time on your administration system and the appropriate Java plug-in is not already installed on your system, it will be downloaded and installed automatically. However, in order to make the installation possible, you still need to answer the according dialogs with "yes". The download volume is around 11 Mbytes. The advantage of downloading Sun's JVM lays in providing a stable and identical Java Virtual Machine across different platforms. The Remote Console software is optimized for this JVM versions and offers wider range of functionality when run in SUN's JVM. Please make sure that you are installing Sun JVM 1.4.2 or above to your client system.

Miscellaneous Remote Console Settings

■ Start in Monitor Mode

Sets the initial value for the monitor mode. By default the monitor mode is off. In case you switch it on, the Remote Console window will be started in a read only mode.

■ Start in Exclusive Access Mode

Enables the exclusive access mode immediately at Remote Console startup. This forces the Remote Consoles of all other users to close. No one can open the Remote Console at the same time again until this user disables the exclusive access or logs off.

Mouse Hotkey

Allows to specify a hotkey combination which starts either the mouse synchronization process if pressed in the Remote Console, or is used to leave the single mouse mode.

Remote Console Button Keys

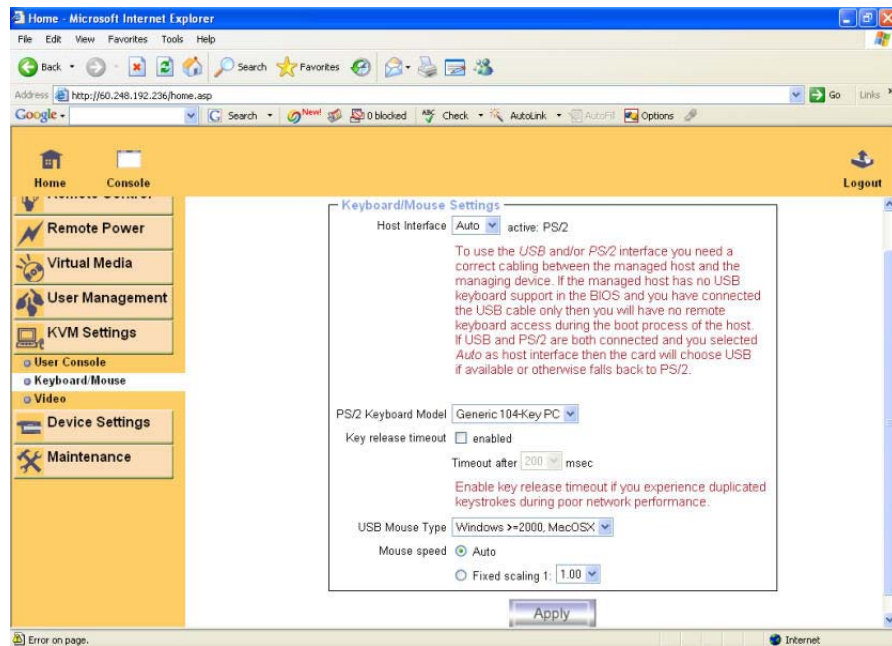
Button Keys allow simulating keystrokes on the remote system that cannot be generated locally. The reason for this might be a missing key or the fact, that the local operating system of the Remote Console is unconditionally catching this keystroke already. Typical examples are "Control+Alt+Delete" on Windows and DOS, what is always caught, or "Control+Backspace" on Unix or Unix-like OS for terminating the X-Server. The syntax to define a new Button Key is as follows:

```
[confirm] <keycode>[+|-[*]<keycode>]*
```

"confirm" requests confirmation by a dialog box before the key strokes will be sent to the remote host.

"keycode" is the key to be sent. Multiple key codes can be concatenated with a plus, or a minus sign. The plus sign builds key combinations, all keys will be pressed until a minus sign or the end of the combination is encountered. In this case all pressed keys should be released in reversed sequence. The minus sign builds single, separate key presses and releases. The star inserts a pause with duration of 100 milliseconds.

3-3.2 Keyboard / Mouse



Host Interface

Enables a certain interface the mouse is connected to. You can choose between “Auto” for automatic detection, “USB” for an USB mouse, and “PS/2” for a PS/2 mouse.

Warning

To use the USB and/or PS/2 interface you need a correct cabling between the managed host and the managing device. If the managed host has no USB keyboard support in the BIOS and you have connected the USB cable only then you will have no remote keyboard access during the boot process of the host. If USB and PS/2 are both connected and you selected “Auto” as host interface, then the card will select “USB” if available or otherwise falls back to “PS/2”.

To get USB remote keyboard access during the boot process of the host, the following conditions must be fulfilled:

- The host BIOS must have USB keyboard support
- The USB cable must be connected or must be selected in the Host interface option

PS/2 Keyboard Model

Enables a certain keyboard layout. You can choose between “Generic 101-Key PC” for a standard keyboard layout, “Generic 104-Key PC” for a standard keyboard layout extended by three additional windows keys, “Generic 106-Key PC” for a japanese keyboard, and “Apple Macintosh” for the Apple Macintosh.

Keyboard timeout

Recommended as “enable” for keyboard timeout when host is UNIX or UNIX-like OS.

USB Mouse Type

Enables USB mouse type. Choose between “Windows >= 2000 , MacOSX” for MS Windows 2000 or Windows XP, Mac OSX or “Other Operating Systems” for MS Windows NT, Unix or Unix-like OS, or OS X. In “Windows >= 2000 , MacOSX” mode the remote mouse is always synchronized with the local mouse.

Mouse Speed

■ Auto mouse speed

Use this option if the mouse settings on host use an additional acceleration setting. The IP module tries to detect the acceleration and speed of the mouse during the mouse sync process.

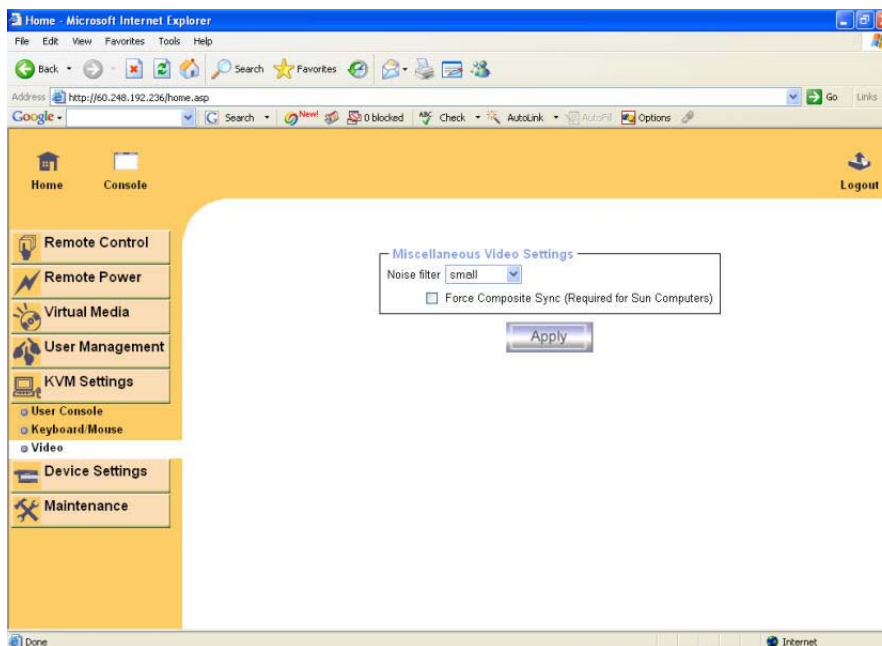
■ Fixed mouse speed

Use a direct translation of mouse movements between the local and the remote pointer.

You may also set a fixed scaling which determines the pixel-amount of the remote mouse pointer movement when the local mouse pointer is moved by one pixel. This option is used to manually control the remote mouse speed and only works when the mouse settings on the host are linear. This means mouse acceleration of OS should be disabled, and the intelligent mouse synchronization of IP module is not functioning under this setting.

To set the options, click on the button “Apply”.

3-3.3 Video



Miscellaneous Video Settings

■ Noise filter

This option defines how the IP module reacts to small changes in the video input signal. Turning on the noise filter can help reduce video flickering that is often caused by distortions, as well as lowering unnecessary bandwidth consumption. A large filter setting needs less network traffic and leads to a faster video display, but small changes in some display regions may not be recognized immediately. A small filter displays all changes instantly but may lead to a constant amount of network traffic even if the display content is not really changing (depending on the quality of the video input signal). All in all the default setting should be suitable for most situations.

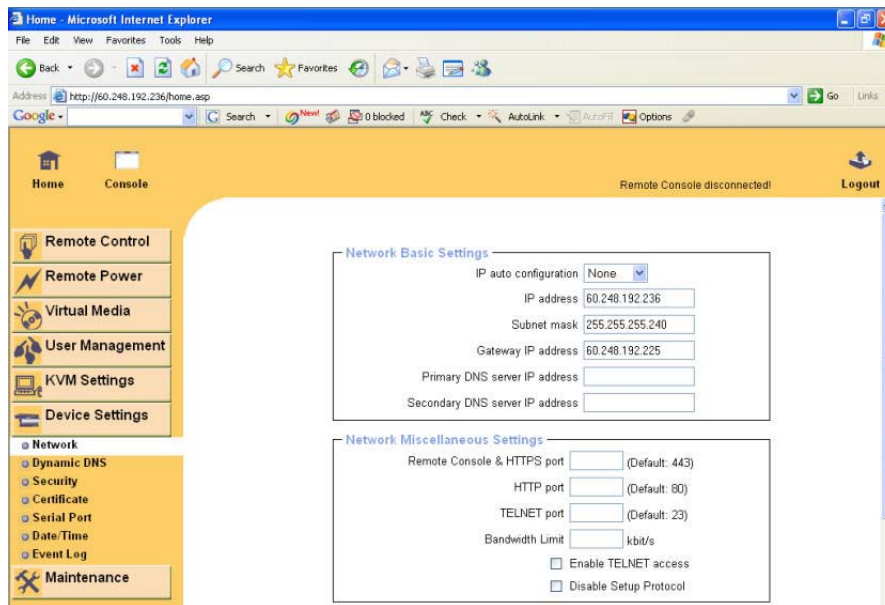
■ Force Composite Sync (Required for Sun Computers)

When connecting the device directly to legacy Sun computer (with composite sync as the video output, it may be possible that IP MODULE don't recognize the composite sync automatically. To support signal transmission from a Sun machine, enable this option. If not enabled the picture of the remote console will not be visible. To set the options, click on the button "Apply"

3-4 Device Settings

3-4.1 Network

The Network Settings panel as shown below allows changing network related parameters. Each parameter will be explained below. Once applied the new network settings will immediately come into effect.



Warning

The initial IP configuration is usually done directly at the host system using the special procedure.

Changing the network settings of the IP module might result in losing connection to it. In case you change the settings remotely make sure that all the values are correct and you still have an option to access the IP module.

IP Auto Configuration

With this option you can control if the IP module should fetch its network settings from a DHCP or BOOTP server. For DHCP, select "dhcp", and for BOOTP select "bootp" accordingly. If you choose "none" then IP auto configuration is disabled.

IP Address

IP address in the usual dot notation.

Subnet Mask

The net mask of the local network.

Gateway IP Address

In case the IP module should be accessible from networks other than the local one, this IP address must be set to the local network router's IP address.

Primary DNS Server IP Address

IP address of the primary Domain Name Server in dot notation. This option may be left empty, however the IP module will not be able to perform name resolution.

Secondary DNS Server IP Address

IP address of the secondary Domain Name Server in dot notation. It will be used in case the Primary DNS Server cannot be contacted.

Remote Console And HTTPS port

Port number at which the IP module's Remote Console server and HTTPS server are listening. If left empty the default value will be used.

HTTP Port

Port number at which the IP module's HTTP server is listening. If left empty the default value will be used.

Telnet Port

Port number at which the IP module's Telnet server is listening. If left empty the default value will be used.

Bandwidth Limitation

The maximum network traffic generated through the IP module ethernet device. Value in Kbit/s.

Enable Telnet Access

Set this option to allow accessing the IP module using the Telnet Gateway see the section 6.1.2.

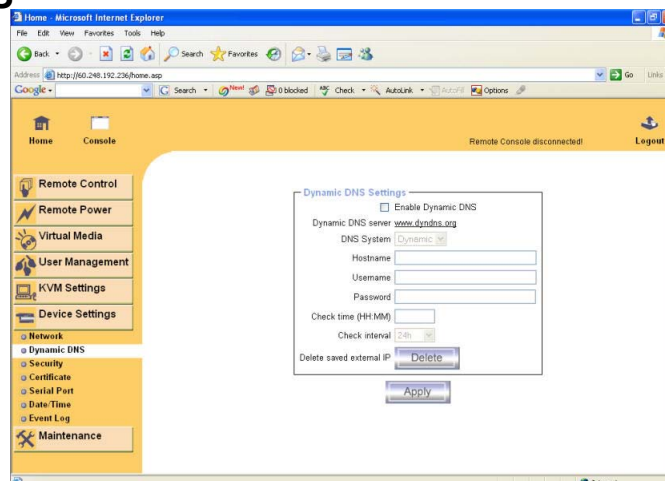
Disable Setup Protocol

Enable this option to exclude the IP module from the setup protocol. Setup protocol is a proprietary layer-2 MAC-based protocol to allow some configuration software to detect IP MODULE devices in the network, even without IP address, and then config network related settings to IP module.

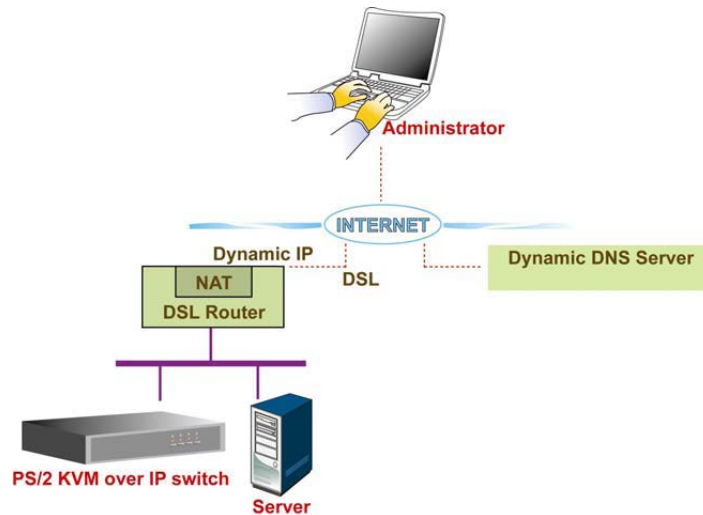
LAN Interface Settings

The "Autodetect" will set the ethernet speed to the fastest possible value supported by both endpoints of the link. For example, if you use a 10M/half duplex HUB, this speed will be auto-selected. If this option does not work with some network device (HUB, switches, and routers), you can set the Ethernet interface speed of IP module manually to the values as supported by the network device.

3-4.2 Dynamic DNS



A freely available Dynamic DNS service (www.dyndns.org) can be used in the following scenario:



The IP module is reachable via the IP address of the DSL router, which is dynamically assigned by the provider. Since the administrator does not know the IP address assigned by the provider, the IP module connects to a special dynamic DNS server in regular intervals and registers its IP address there. The administrator may contact this server as well and pick up the same IP address belonging to his card.

The administrator has to register an IP module that is supposed to take part in the service with the Dynamic DNS Server and assign a certain hostname to it. He will get a nickname and a password in return to the registration process. This account information together with the hostname is needed in order to determine the IP address of the registered IP module.

You have to perform the following steps in order to enable Dynamic DNS:

- Make sure that the LAN interface of the IP module is properly configured.
- Enter the Dynamic DNS Settings configuration dialog.
- Enable Dynamic DNS and change the settings according to your needs (see below).

Enable Dynamic DNS

This enables the Dynamic DNS service. This requires a configured DNS server IP address.

Dynamic DNS server

This is the server name where IP module registers itself in regular intervals. Currently, this is a fixed setting since only dyndns.org is supported for now.

DNS System

Choose Dynamic for free DNS service. Custom for your own domain.

Hostname

This is the hostname of the IP module that is provided by the Dynamic DNS Server. (use the whole name including the domain, e.g. `testserver.dyndns.org`, not just the actual hostname).

Username

You have registered this username during your manual registration with the Dynamic DNS Server. Spaces are not allowed in the Nickname.

Password

You have used this password during your manual registration with the Dynamic DNS Server.

Check time

The IP module registers itself for initiating the IP address of IP module stored in the Dynamic DNS server at this time.

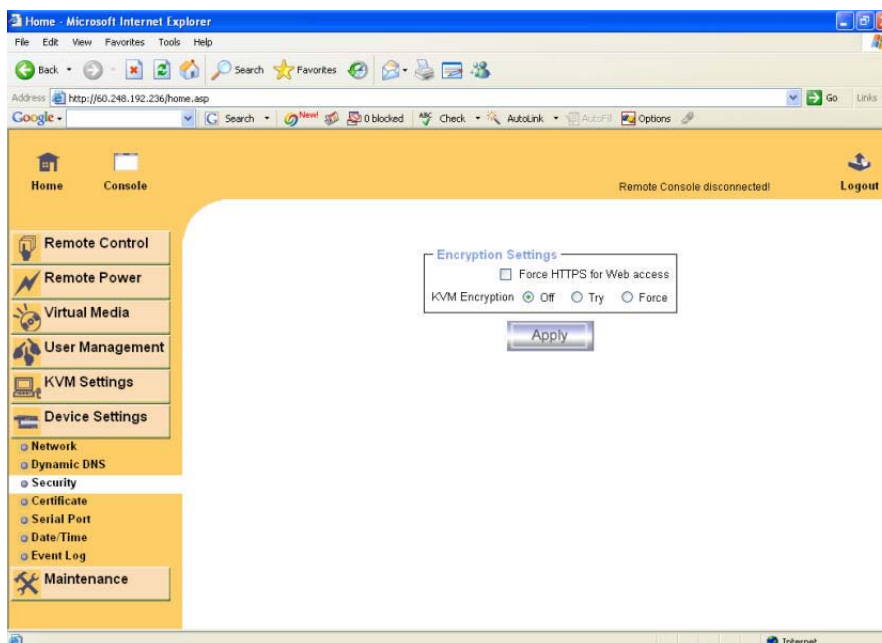
Check interval

This is the interval for reporting again to the Dynamic DNS server for updating the IP address associated with the Domain Name of the IP module.

Warning

The IP module has its own independent real time clock. Make sure the time setting of the IP module is correct. (see the Section called Date And Time)

3-4.3 Security



Force HTTPS

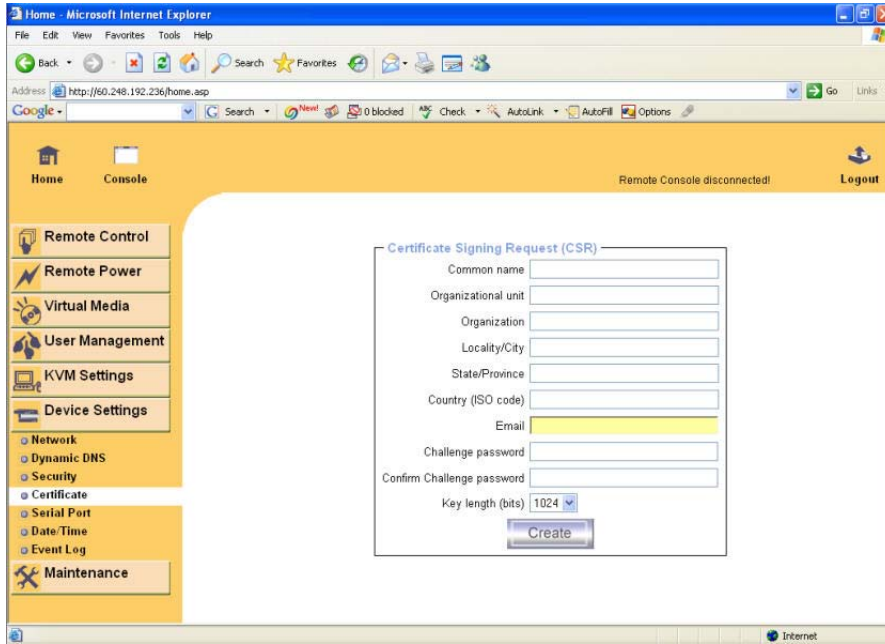
If this option is enabled access to the web front-end is only possible using an HTTPS connection. The IP module will not listen on the HTTP port for incoming connections.

In case you want to create your own SSL certificate that is used to identify the IP module refer to the Section called Certificate.

KVM Encryption

This option controls the encryption of the RFB protocol. RFB is used by the Remote Console to transmit both the screen data to the administrator machine and keyboard and mouse data back to the host. If set to "Off" no encryption will be used.

3-4.4 Certificate

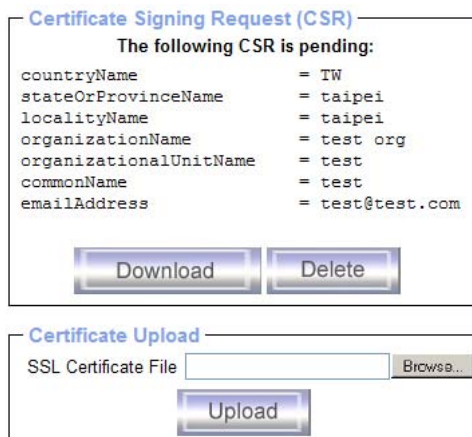


The IP module uses the Secure Socket Layer (SSL) protocol for any encrypted network traffic between itself and a connected client. During the connection establishment the IP module has to expose its identity to a client using a cryptographic certificate. The default certificate comes with IP MODULE device upon delivery is for testing purpose only. System administrator should not rely on this default certificate as the secured global access mechanism through Internet.

However, it is possible to generate and install a new base64 X.509 certificate that is unique for a particular IP module. In order to do that, the IP module is able to generate a new cryptographic key and the associated Certificate Signing Request (CSR) that needs to be certified by a certification authority (CA). A certification authority verifies that you are the person who you claim you are, and signs and issues a SSL certificate to you.

The following steps are necessary to create and install a SSL certificate for the IP module:

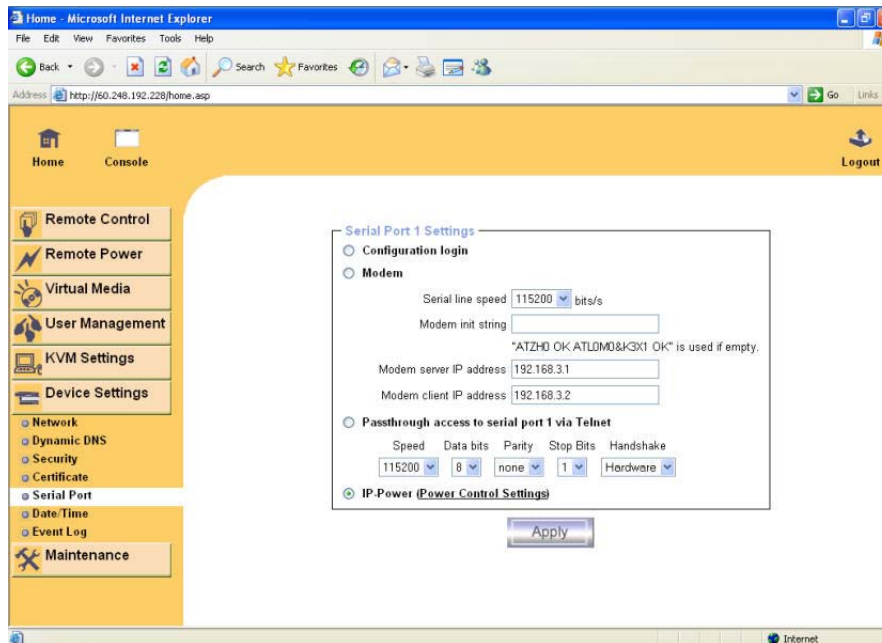
- Create a SSL Certificate Signing Request using the panel shown below. You need to fill out a number of fields that are explained below. Once this is done, click on the button “Create” which will initiate the Certificate Signing Request generation. The CSR can be downloaded to your administration machine with the “Download CSR” button.
- Send the saved CSR string to a CA for certification. You will get the new certificate from the CA after a more or less complicated traditional authentication process (depending on the CA).
- Upload the certificate to the IP module using the “Upload” button as shown below.



Key length

This is the length of the generated key in bits. 1024 Bits are supposed to be sufficient for most cases. Longer keys may result in slower response time of the IP module during connection establishment.

3-4.5 Serial Port



The IP module Serial Settings allows you to specify what device is connected to the serial port and how to use it.

Configuration or console login

Do not use the serial port for any special function, use it only for the initial configuration.

Modem

The IP module offers remote access using a telephone line in addition to the standard access over the built-in Ethernet adapter. The modem needs to be connected to the serial interface of the IP module. Logically, connecting to the IP module using a telephone line means nothing else than building up a dedicated point-to-point connection from your console computer to the IP module. In other words, the IP module acts as an Internet Service Provider (ISP) to which you can dial in. The connection is established using the Point-to-Point Protocol (PPP). Before you connect to the IP module, make sure to configure your console computer accordingly. For instance, on Windows based operating systems you can configure a dial-up network connection, which defaults to the right settings like PPP.

The Modem Settings panel allows you to configure the remote access to the IP module using a modem. The meaning of each parameter will be described below. The modem settings are part of the serial settings panel.

Serial line speed

The speed the IP module is communicating with the modem. Most of all modems available today will support the default value of 115200 bps. In case you are using an old modem and discovering problems try to lower this speed.

Modem Init String

The initialization string used by the IP module to initialize the modem. The default value will work with all modern standard modems directly connected to a telephone line. In case you have a special modem or the modem is connected to a local telephone switch that requires a special dial sequence in order to establish a connection to the public telephone network, you can change this setting by

giving a new string. Refer to the modem's manual about the AT command syntax.

Modem server IP address

This IP address will be assigned to the IP module itself during the PPP handshake. Since it is a point-to-point IP connection virtually every IP address is possible but you must make sure, it is not interfering with the IP settings of the IP module and your console computer. The default value will work in most cases.

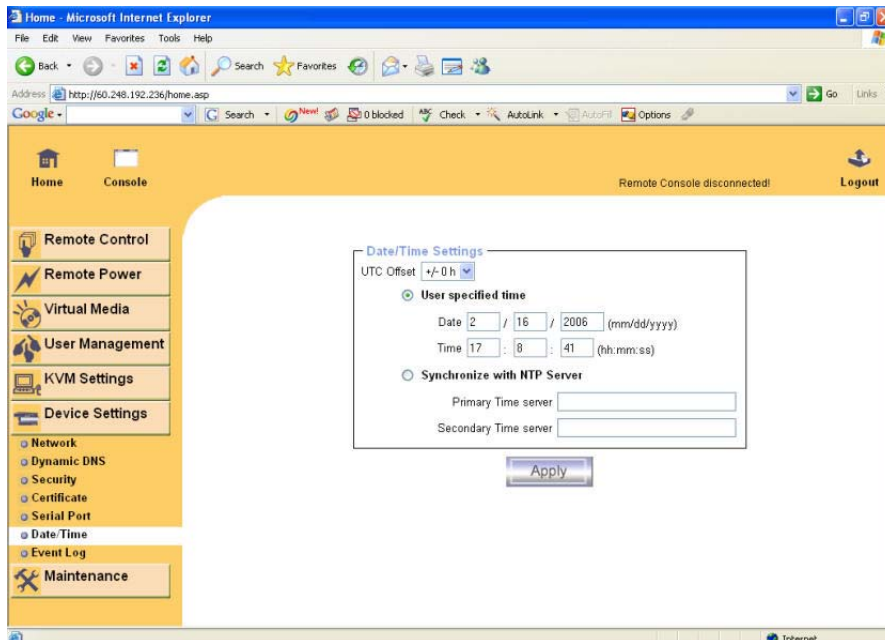
Modem client IP address

This IP address will be assigned to your console computer during the PPP handshake. Since it is a point-to-point IP connection virtually every IP address is possible but you must make sure, it is not interfering with the IP settings of the IP module and your console computer. The default value will work in most cases.

Passthrough access to serial port via Telnet

Using this option, it is possible to connect an arbitrary device to the serial port and access it (assuming it provides terminal support) via Telnet. Select the appropriate options for the serial port and use the Telnet Console, or a standard Telnet client to connect to the IP module.

3-4.6 Date and Time

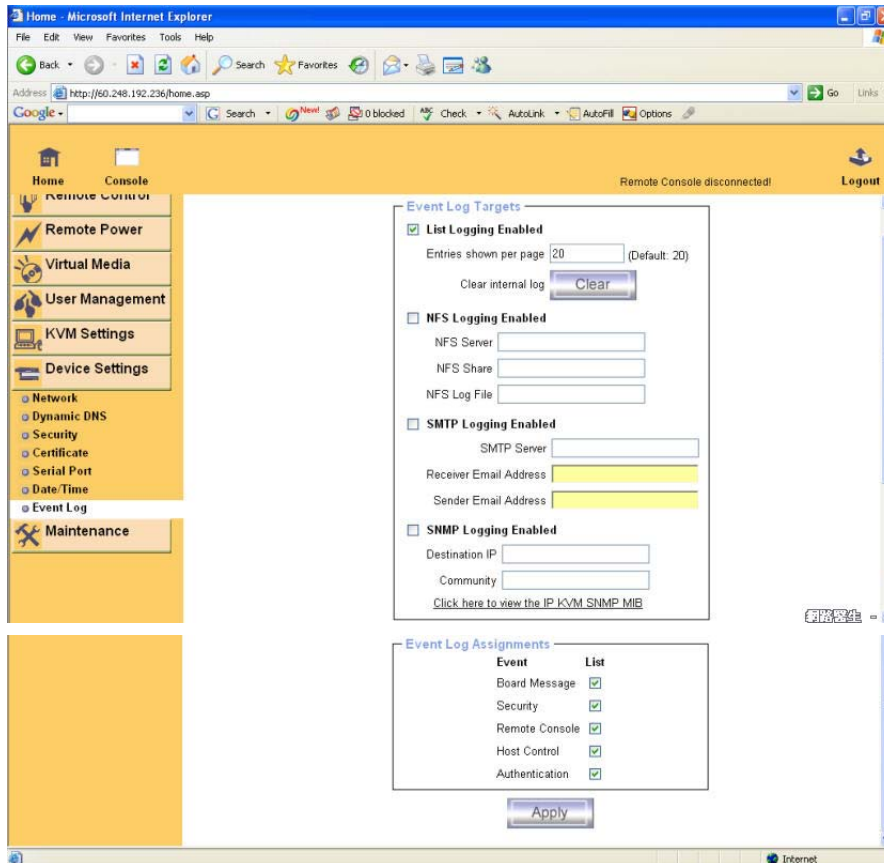


This link refers to a page, where the internal real-time clock of the IP module can be set up (see Figure 3-32). You have the possibility to adjust the clock manually, or to use a NTP timeserver. Without a timeserver, your time setting will not be persistent, so you have to adjust it again, after IP module loses power for more than a few minutes. To avoid this, you can use a NTP timeserver, which sets up the internal clock automatically to the current UTC time. Because NTP server time is always UTC, there is a setting that allows you to set up a static offset to get your local time.

Warning

There is currently no way to adjust the daylight saving time automatically. So you have to set up the UTC offset twice a year properly to the local rules of your country.

3-4.7 Event Log



Important events like a login failure or a firmware update are logged to a selection of logging destinations. Each of those events belongs to an event group, which can be activated separately.

The common way to log events is to use the internal log list of the IP module. To show the log list, click on "Event Log" on the "Maintenance" page. In the Event Log Settings you can choose how many log entries are shown on each page. Furthermore, you can clear the log file here.

List logging enabled

The common way to log events is to use the internal log list of the IP module. To show the log list, click on "Event Log" on the "Maintenance" page.

Since the IP module's system memory is used to save all the information, the maximum number of possible log list entries is restricted to 1.000 events. Every entry that exceeds this limit overrides the oldest one, automatically.

Warning

If the reset button on the HTML frontend is used to restart the IP module, all logging information is saved permanently and is available after the IP module has been started. If the IP module loses power or a hard reset is performed, all logging data will be lost. To avoid this, use one of the following log methods.

NFS Logging Enabled

Define a NFS server, where a directory or a static link have to be exported, to write all logging data to a file that is located there. To write logging data from more than one IP module devices to only one NFS share, you have to define a file name that is unique for each device. When you change the NFS settings and press the button "Apply", the NFS share will be mounted immediately. That means, the NFS share and the NFS server must be filled with valid sources or you will get an error message.

SMTP Logging enabled

With this option, the IP module is able to send Emails to an address given by the Email address text field in the Event Log Settings. These mails contain the same description strings as the internal log file and the mail subject is filled with the event group of the occurred log event. In order to use this log destination you have to specify a SMTP server, that has to be reachable from the IP module device and that needs no authentication at all (<serverip>:<port>).

SNMP Logging enabled

If this is activated, the IP module sends a SNMP trap to a specified destination IP address, every time a log event occurs. If the receiver requires a community string, you can set it in the appropriate text field. Most of the event traps only contain one descriptive string with all information about the log event. Only authentication and host power events have an own trap class that consists of several fields with detailed information about the occurred event. To receive this SNMP traps, any SNMP trap listener may be used.

Here is a example of all generated event and its event group.

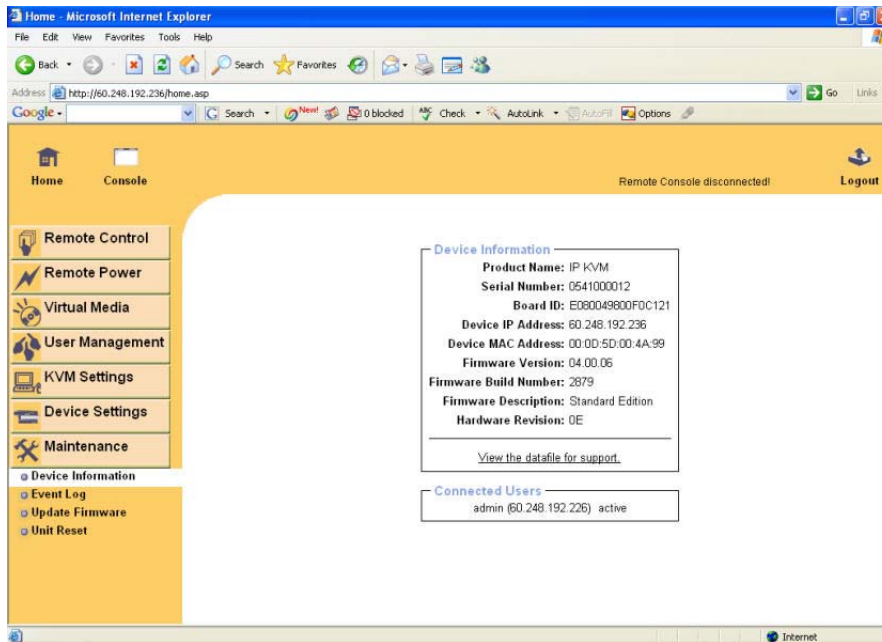
Device succesfully started	device
Board Reset performed by user...	device
Firmware upload failed.	device
No firmware file uploaded.	device
Uploaded firmware file discarded.	device
Firmware validation failed.	device
Firmware file uploaded by user...	device
Firmware updated by user...	device
Internal log file cleared by user...	device
Security Violation	security
Host Power	host
Host Reset	host
Connection to Remote Console failed: reason.	console (several)
Connection to client ... established.	console
Connection to client ... closed.	console
Login failed.	auth
Login succeed.	auth

Warning

In contrast to the internal log file on the IP module, the size of the NFS log file is not limited. Every log event will be appended to the end of the file so it grows continuously and you may have to delete it or move it away from time to time.

3-5 Maintenance

3-5.1 Device Information



Device Summary

This section contains a summary with various information about this IP module and its current firmware and allows you to reset the card.

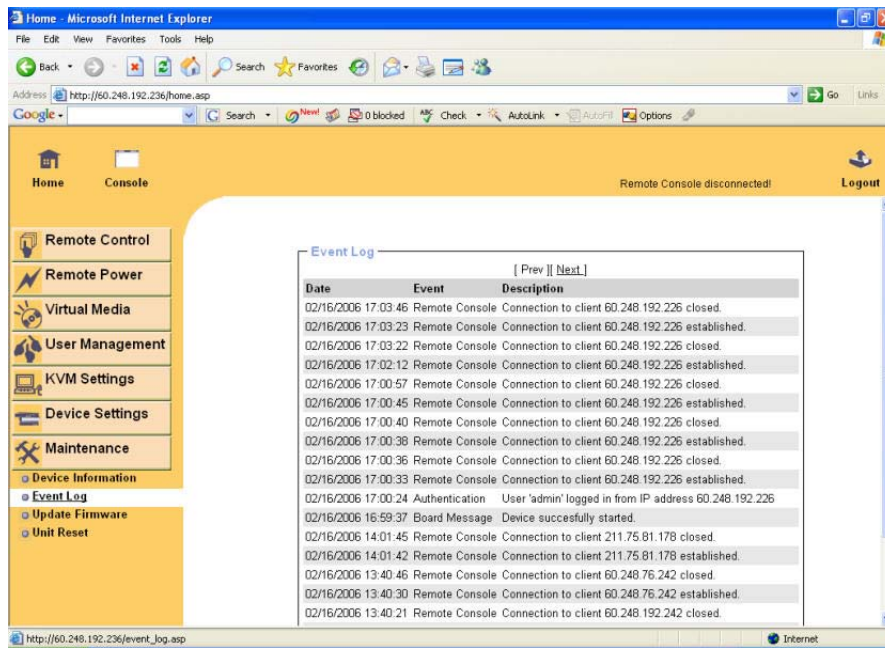
The Data file for support allows you to download the IP module data file with specific support information. This is an XML file with certain customized support information like the serial number etc. You may send us this information together with a support request. It will help us to locate and solve your reported problem.

Connected Users

test (62.238.0.39)	active
test (80.145.25.183)	26 min idle
test (212.183.10.29)	20 min idle
test (62.153.241.228) RC (exclusive)	active

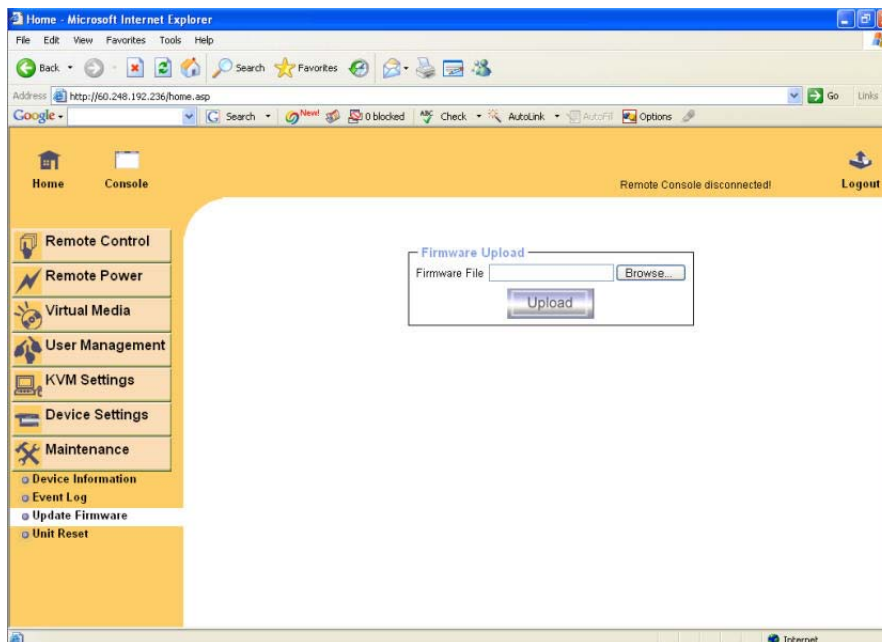
The image above displays the IP module activity. From left to right the connected user(s), its IP address (from which host the user comes from) and its activity status is displayed. RC means that the Remote Console is open. If the Remote Console is opened in exclusive mode the term (exclusive mode) is added. For more information about this option see the Section called Remote Console Control Bar in Chapter 5. To display the user activity the last column contains either the term active for an active user or 30 min idle for an user who is inactive for a certain amount of time.

3-5.2 Event Log



The image above displays the log list including the events that are logged by the IP module.

3-5.3 Update Firmware



The IP module is a complete standalone computer. The software it runs is called firmware. The firmware of the IP module can be updated remotely in order to install new functionality or special features.

A new firmware update is a binary file which will be sent to you by email or which you can download from the supplier web site. If the firmware file is compressed (file suffix .zip) then you must unzip it before you can proceed. Under the Windows operating system you may use WinZip from <http://www.winzip.com/> for decompression. Other operating systems might provide a program called unzip.

Before you can start updating the firmware of your IP module the new uncompressed firmware file has to be accessible on the system that you use for connecting to the IP module.

Updating the firmware is a three-stage process:

1. Firstly, the new firmware file is uploaded onto the IP module. In order to do that you need to select the file on your local system using the button “Browse” of the Upload Firmware panel. Once the firmware file has been uploaded, it is checked whether it is a valid firmware file and whether there were any transmission errors. In case of any error the Upload Firmware function will be aborted.
2. Secondly, if everything went well, you see the Update Firmware panel. The panel shows you the version number of the currently running firmware and the version number of the uploaded firmware. Pressing the button “Update” will store the new version and substitute the old one completely.

Warning

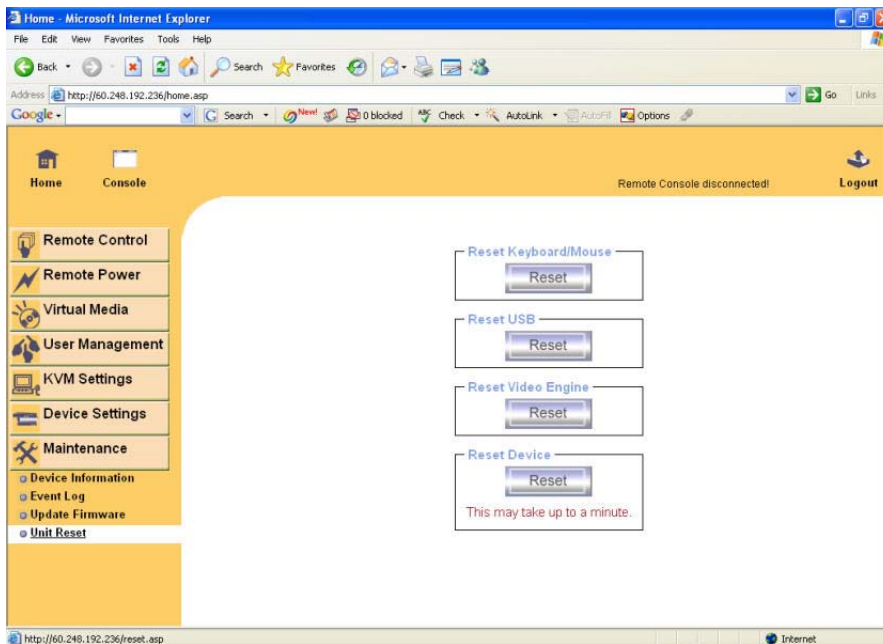
This process is not reversible and might take some minutes. Make sure the IP module’s power supply will not be interrupted during the update process, because this may cause an unusable card.

3. Thirdly, after the firmware has been stored, the panel will request you to reset the IP module manually. Half a minute after the reset, the IP module will run with the new firmware version and should be accessible. However, you are requested to login once again.

Warning

The three-stage firmware update process and complete consistency check are making a mistake in updating the firmware almost impossible. However, only experienced staff members or administrators should perform a firmware update. Make sure the IP module’s power supply will not be interrupted!

3-5.4 Unit Reset



This section allows you to reset specific parts of the device. This involves the both keyboard and mouse, the video engine and the IP module itself. Resetting the card itself is mainly needed to activate a newly updated firmware. It will close all current connections to the administration console and to the Remote Console.

The whole process will take about half a minute. Resetting sub devices (e.g. video engine) will take some seconds only and does not result in closing connections. To reset a certain IP module functionality click on the button Reset as displayed in the image above.

Note: Only the super user is allowed to reset the IP module.

4 Troubleshooting

The remote mouse doesn't work or is not synchronous

Make sure the mouse settings in IP module match the mouse model. There are some circumstances where the mouse synchronization process could behave incorrectly, refer to Sections 2.4.1 & 3.5.22 for further explanation.

The video quality is bad or the picture is grainy

Try to correct the brightness and contrast settings (see Sections 5.4.1 & 6.5.3) until they are out of a range where the picture looks grainy. Use the auto adjustment feature to correct a flickering video.

Login on IP module fails.

Was the correct combination of user and password given? On delivery, the user "super" has the password "pass". Moreover your browser must be configured to accept cookies.

The Remote Console window can't connect to IP module.

Possibly a firewall prevents access to the Remote Console. Make sure the TCP port numbers 443 or 80 are open for incoming TCP connection establishments.

No connection can be established to IP module.

Check whether the network connection is working in general (ping the IP address of IP module). If not, check network hardware. Is IP module powered on? Check whether the IP address of IP module and all other IP related settings are correct! Also verify that all the IP infrastructure of your LAN, like routers etc., is correctly configured. Without a ping functioning, IP module can't work either.

Special key combinations, e.g. ALT+F2, ALT+F3 are intercepted by the console system and not transmitted to the host.

You have to define a so-called 'Button Key'. This can be done in the Remote Console settings.

In the browser the IP module pages are inconsistent or chaotic.

Make sure your browser cache settings are feasible. Especially make sure the cache settings are not set to something like "never check for newer pages". Otherwise IP module pages may be loaded from your browser cache and not from the card.

Windows XP doesn't awake from standby mode

This is possibly a Windows XP problem. Try not to move the mouse while XP goes in standby mode.

Can't upload the signed certificate in MacOS X

If an 'internal error' occurs while uploading the signed certificate either change the extension of the file to .txt or add a file helper using the Internet Explorer preferences for this type of file. Make sure that the encoding is plain text and the checkbox 'use for outgoing' is checked. Another possibility is to use a Mozilla based browser.

Every time I open a dialog box with some buttons the mouse pointers are not synchronous anymore

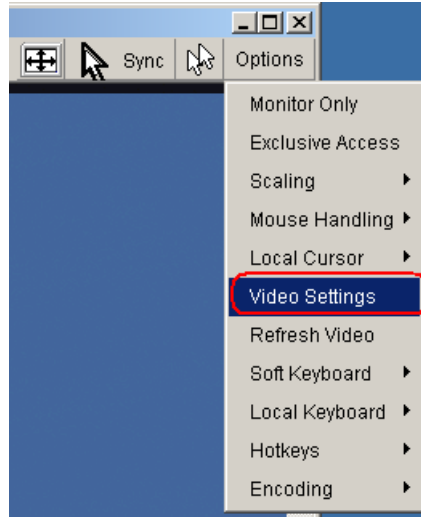
Please check, if you have an option like "Automatically move mouse pointer to the default button of dialog boxes" enabled in the mouse settings of the operating system. This option needs to be disabled.

5 Frequently Asked Questions

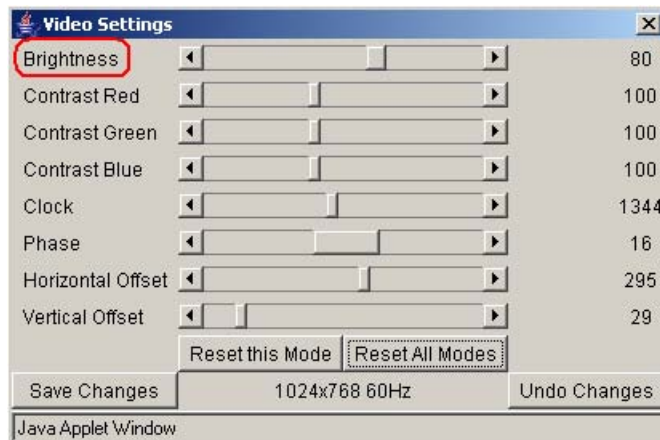
The color of remote console displaying a pinkish tint.

If you are experiencing the remote control screen displaying a pinkish tint with some graphic cards, please try adjusting the brightness of the remote console by following steps below.

1. Click Video Settings in Options menu of the remote console.



2. Adjust the Brightness setting until the pinkish tint is reduced or eliminated.



Does any software require on servers which connect to the IP module?

No, the IP module is a 100% hardware solution. No extra software require on servers.

What operating systems does IP module support?

The IP module supports Windows 98, Windows ME, Windows 2000, Windows XP, Unix, Unix-like Operating System (Sun Solaris, Linux) and Mac OSX.

What browsers does IP module support?

The IP module support Microsoft Internet Explorer version 6.0 or higher, Netscape 7.0 and Mozilla 1.6

Does the IP module work with other brand's KVM switch?

Yes, the IP module can work with most standard KVM.

How many letters the username and password can be set on IP module?

The IP module accepts 32 letters of username and password.

How many concurrent user of IP module?

The IP module accepts 15 concurrent users.

How many bits of connection encrypted of IP module?

The IP module provides AES 256 bits connection encrypted.

Local mouse and remote mouse didn't sync after doing mouse Intelligent Sync.

Please don't put window on left-up corner of remote console of IP module. Intelligent Sync has to recalculate the coordinate of mouse from left-up corner on remote console.

6 Addendum

A. Key Codes

The table below shows the key codes used to define keystrokes or hotkeys for several functions. Please note that these key codes do not represent necessarily key characters that are used on international keyboards. They name a key on a standard 104 key PC keyboard with an US English language mapping. The layout for this keyboard is shown in the image below. However, most modifier keys and other alphanumeric keys used for hotkey purposes in application programs are on an identical position, no matter what language mapping you are using. Some of the keys have aliases also, means they can be named by 2 key codes (separated by comma in the table).

Esc	F1	F2	F3	F4	F5	F6	F7	F8	F9	F10	F11	F12	Prnt	Scrl	Brk						
~	1	2	3	4	5	6	7	8	9	0	-	=	Bsp	Ins	Posl	Pgup	Num	/	*	-	
tab	q	w	e	r	t	y	u	i	o	p	[]	CR	Del	End	Pgdn	7	8	9	+	
Caps	a	s	d	f	g	h	j	k	l	;	'	\					4	5	6		
LShift	z	x	c	v	b	n	m	,	.	?	Rshift			Up			1	2	3	CR	
Lctrl	Win	Alt	Space					AltGR	Menu	RCtrl	Left	Down	Right	0	.						

Key (and aliases)		
0-9	SPACE	PAGE DOWN
A - Z	ALTGR	UP
, TILDE	ESCAPE, ESC	LEFT
-, MINUS	F1	DOWN
=, EQUALS	F2	RIGHT
;	F3	NUM LOCK
'	F4	NUMPAD0
<, LESS	F5	NUMPAD1
,	F6	NUMPAD2
.	F7	NUMPAD3
/, SLASH	F8	NUMPAD4
BACKSPACE	F9	NUMPAD5
TAB	F10	NUMPAD6
[F11	NUMPAD7
]	F12	NUMPAD8
ENTER	PRINTSCREEN	NUMPAD9
CAPS LOCK	SCROLL LOCK	NUMPADPLUS, NUMPAD PLUS
\, BACK SLASH	BREAK	NUMPAD/
LSHIFT, SHIFT	INSERT	NUMPADMINUS, NUMPAD MINUS
RCTRL	HOME	NUMPADPLUS, NUMPAD PLUS
LCTRL, CTRL	DELETE	WINDOWS
LALT, ALT	END	MENU

B. Video Modes

The table below lists the video modes IP module supports. Please don't use other custom video settings besides of these. If done so, IP module may not be able to detect them.

Resolution (x, y)	Refresh Rates
640 x 350	70, 85
640 x 400	56, 70, 85
640 x 480	60, 72, 75, 85, 90, 100, 120
720 x 400	70, 85
800 x 600	56, 60, 70, 72, 75, 85, 90, 100
832 x 624	75
1024 x 768	60, 70, 72, 75, 85, 90, 100
1152 x 864	75
1152 x 864	75
1152 x 870	75
1152 x 900	66
1280 x 960	60
1280 x 1024	60, 75

C. User Role Permissions

The table below lists the user role permissions granted for three user role groups: "Superuser", "Administrator", and "User" .

	User	Administrator	Superuser
Remote Control: KVM	x	x	x
Remote Control: Remote Power	-	x	x
Remote Control: Telnet Console	x	x	x
Virtual Media	x	x	x
User Management: Change Password	x	x	x
User Management: Users	-	-	x
KVM Settings: User Console	x (w/o Misc Settings)	x	x
KVM Settings: Keyboard/Mouse	-	x	x
KVM Settings: Video	-	x	x
Device Settings	-	-	x
Maintenance: Device Information	x	x	x
Maintenance: Event Log	-	-	x
Maintenance: Update Firmware	-	-	x
Maintenance: Unit Reset	Keyboard/Mouse, Video	Keyboard/Mouse, Video	Keyboard/Mouse, Video, Device

D. IP Module Port Table

Port	Protocol	Purpose
23	Telnet over TCP	Web & Telnet Client
80	HTTP over TCP	Web
443	HTTPS over TCP	Web
443	RFB over TCP	Remote Console
443	HTTPS over TCP	Drive Redirection
139	SMB over TCP	CD-ROM Image (Samba Service)
139	SMB over TCP	Floppy disk (Samba Service)
1024	SMB over TCP	Samba Service source port
162	SNMP over TCP	SNMP trap reception port
1024	SNMP over TCP	SNMP source port
443	RFB over TCP	Remote Keyboard and Mouse data

E. Bandwidth Consumption

The preconfigured network speed selection simply results in a different Compression and Color Depth configuration in order to match the different bandwidth limitations of the network type (UMTS, ISDN, etc.)

The following suggested network bandwidth planning table for IP MODULE installation is from the test results with 3D-Labyrinth screen saver at Resolution 800x600, the worst case consuming the highest network bandwidth.

	Compression	Color Depth	Used Bandwidth	Notes
Video Optimized	Video Optimized	8 bit	3.0 - 3.3 MB/s	Uncompressed, synchronized video data, most bandwidth needed
Video Optimized (high color)	Video Optimized	16 bit	4.3 - 5.0 MB/s	Uncompressed, synchronized video data, most bandwidth needed
LAN (high color)	0 (no compression)	16 bit	1.0 - 1.3 MB/s	Uncompressed video data
LAN	0 (no compression)	8 bit	500 - 700 kb/s	Uncompressed video data
DSL	2	8 bit	110 - 140 kb/s	Slower video because of compression
UMTS	4	8 bit	80 - 100 kb/s	Slower video because of compression
ISDN 128k	6	4 bit	20 - 30 kb/s	16 colors
ISDN/Modem V.90	7	2 bit	13 - 17 kb/s	Gray scale
GPRS/HSCSD	8	2 bit	5 - 7 kb/s	Gray scale
GSM Modem	9 (best compression)	1 bit	1 - 3 kb/s	Black&White Video

F. Cable Diagrams

VGA Cable:

HDB 15-pin Male to Male



USB 2.0 Cable:

USB A-B Cable

